

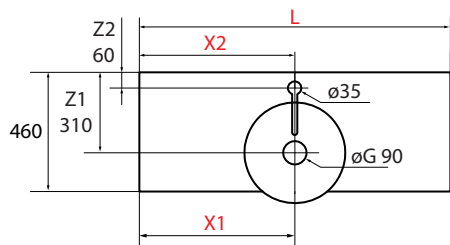
# GUÍA DE TALADROS PARA ENCIMERAS A MEDIDA Y COMPAKT SEGÚN TIPO DE LAVABO

---

## ALTIRO/SEDUCTION/LOKUM/BULKAN/BOL

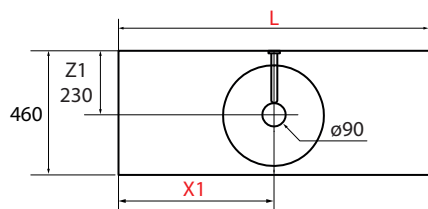
Profundidad 460

Lavabo con grifo centrado



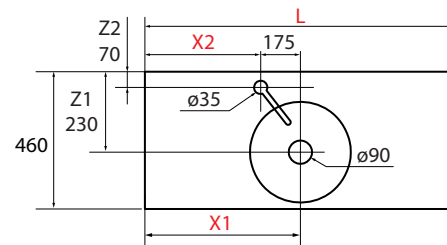
L  $\phi G=90$  X1 X2=X1 Z1=310 Z2=60

Lavabo con grifo a pared

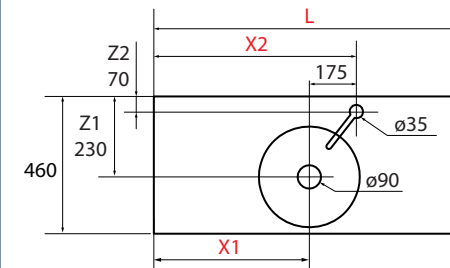


L  $\phi G=90$  X1 Z1=230

Lavabo con grifo descentrado

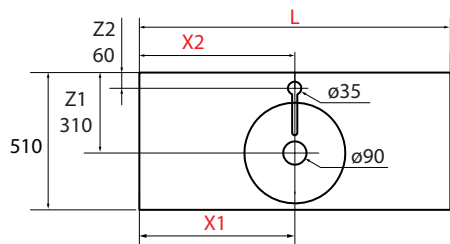


L  $\phi G=90$  X1 X2=X1-175 Z1=230 Z2=70

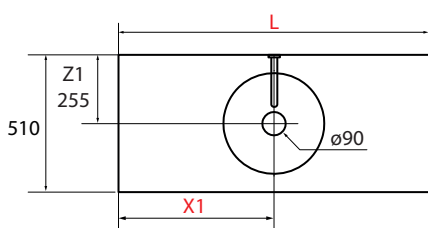


L  $\phi G=90$  X1 X2=X1+175 Z1=230 Z2=70

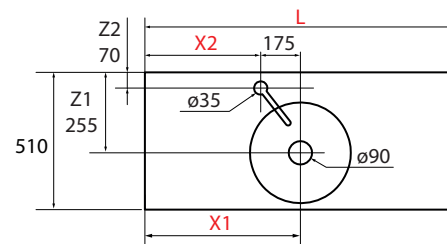
Profundidad 510



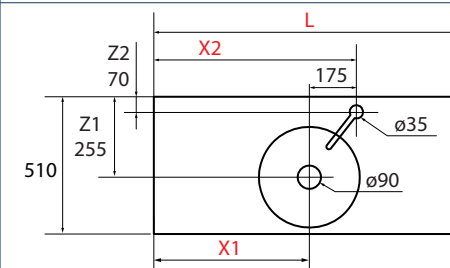
L  $\phi G=90$  X1 X2=X1 Z1=310 Z2=60



L  $\phi G=90$  X1 Z1=255



L  $\phi G=90$  X1 X2=X1-175 Z1=255 Z2=70



L  $\phi G=90$  X1 X2=X1+175 Z1=255 Z2=70

## KANDY

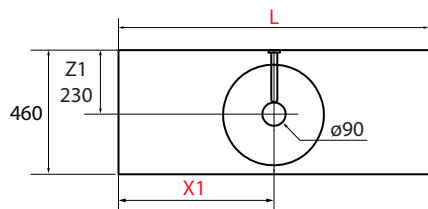
Profundidad 460

Lavabo con grifo centrado



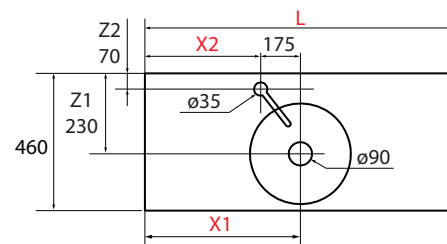
L  $\phi G=90$  X1 X2=X1 Z1=310 Z2=60

Lavabo con grifo a pared

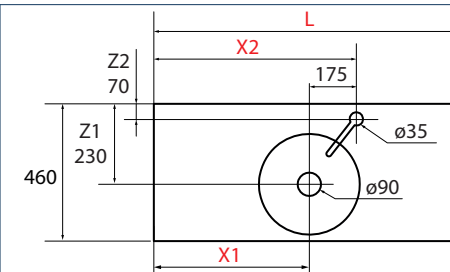


L  $\phi G=90$  X1 Z1=255

Lavabo con grifo descentrado

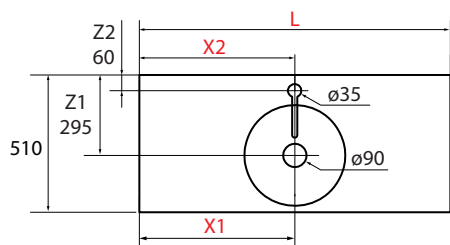


L  $\phi G=90$  X1 X2=X1-175 Z1=255 Z2=70

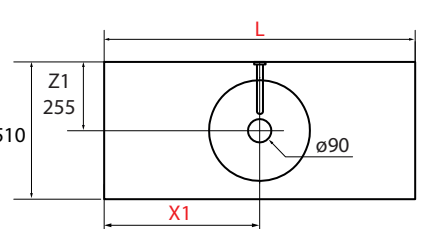


L  $\phi G=90$  X1 X2=X1+175 Z1=255 Z2=70

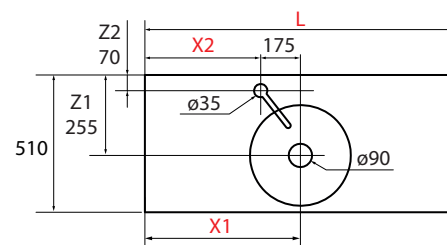
Profundidad 510



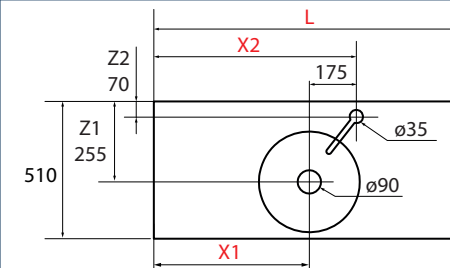
L  $\phi G=90$  X1 X2=X1 Z1=310 Z2=60



L  $\phi G=90$  X1 Z1=255



L  $\phi G=90$  X1 X2=X1-175 Z1=255 Z2=70



L  $\phi G=90$  X1 X2=X1+175 Z1=255 Z2=70

NESLA

VERILA

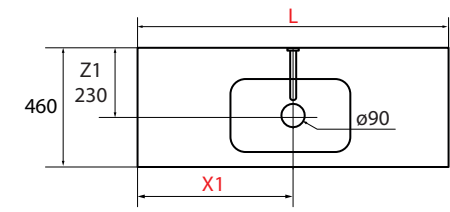
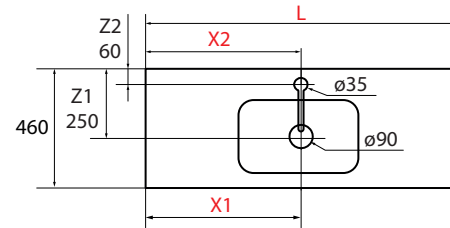
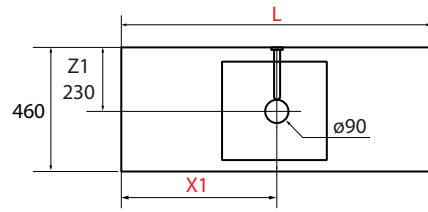
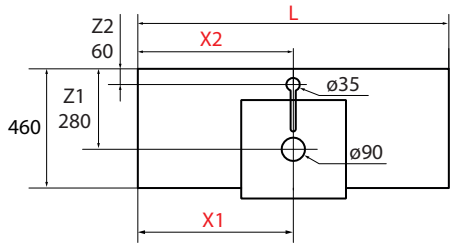
Profundidad 460

Lavabo con grifo centrado

Lavabo con grifo a pared

Lavabo con grifo centrado

Lavabo con grifo a pared



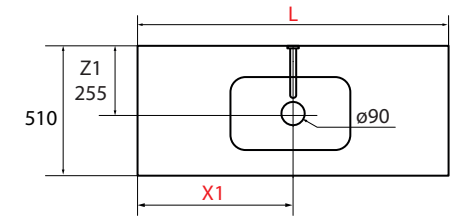
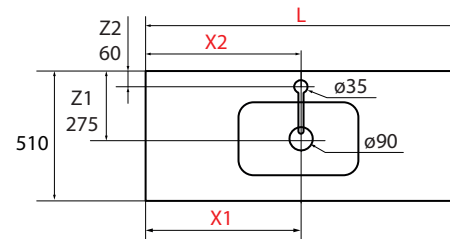
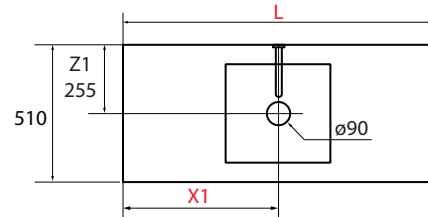
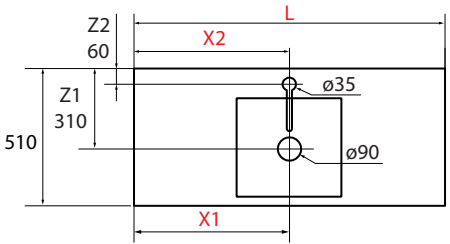
L øG=90 X1 X2=X1 Z1=280 Z2=60

L øG=90 X1 Z1=230

L øG=90 X1 X2=X1 Z1=250 Z2=60

L øG=90 X1 Z1=230

Profundidad 510



L øG=90 X1 X2=X1 Z1=310 Z2=60

L øG=90 X1 Z1=255

L øG=90 X1 X2=X1 Z1=275 Z2=60

L øG=90 X1 Z1=255

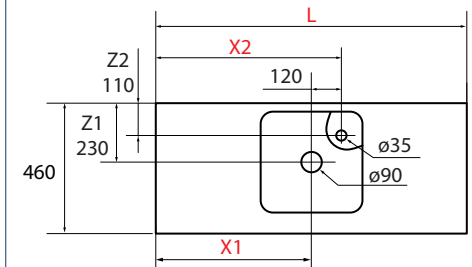
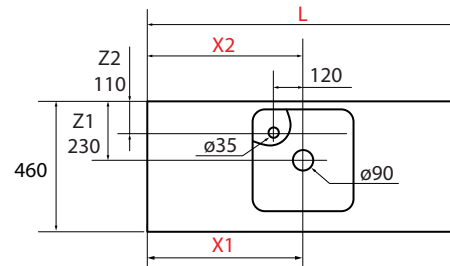
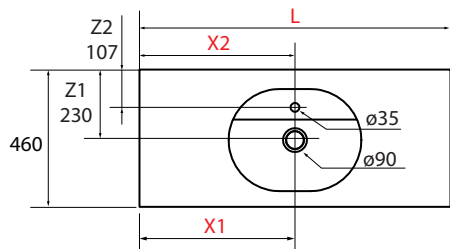
VARMEGA

ELLEN

Profundidad 460

Lavabo con grifo centrado

Lavabo con grifo descentrado

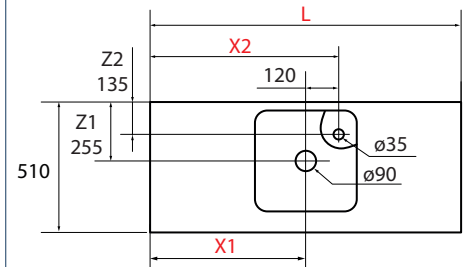
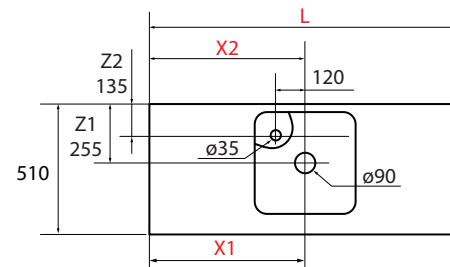
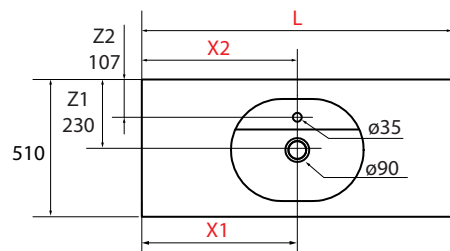


L øG=90 X1 X2=X1 Z1=230 Z2=107

L øG=90 X1 X2=X1-120 Z1=230 Z2=110

L øG=90 X1 X2=X1+120 Z1=230 Z2=110

Profundidad 510



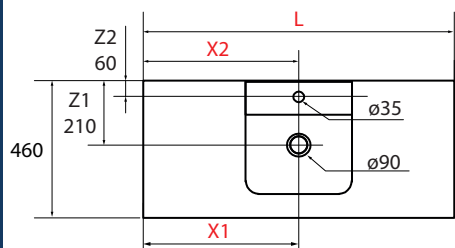
L øG=90 X1 X2=X1 Z1=230 Z2=107

L øG=90 X1 X2=X1-120 Z1=255 Z2=135

L øG=90 X1 X2=X1+120 Z1=255 Z2=135

**TENTO**

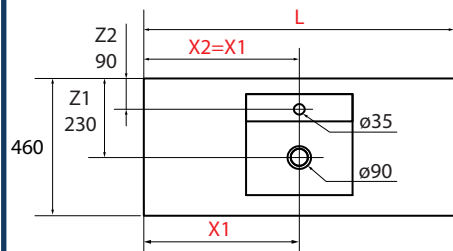
Lavabo con grifo centrado



L øG=90 X1 X2=X1 Z1=210 Z2=60

**TALEA**

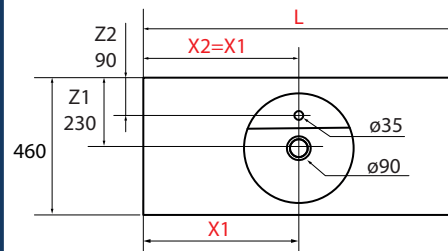
Lavabo con grifo centrado



L øG=90 X1 X2=X1 Z1=230 Z2=100

**BICA**

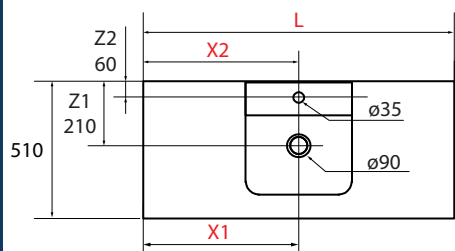
Lavabo con grifo centrado



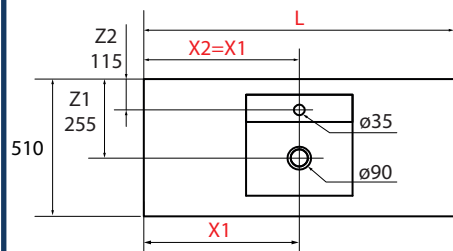
L øG=90 X1 X2=X1 Z1=230 Z2=100

Profundidad 460

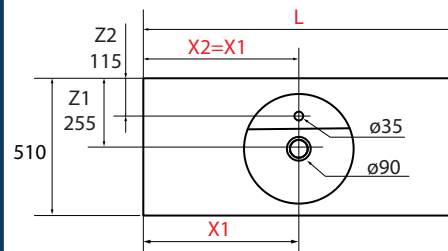
Profundidad 510



L øG=90 X1 X2=X1 Z1=210 Z2=60



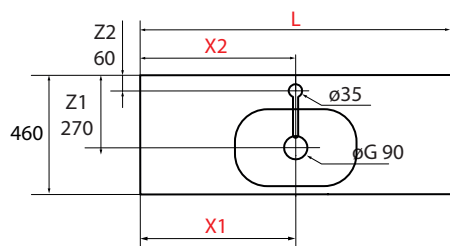
L øG=90 X1 X2=X1 Z1=255 Z2=125



L øG=90 X1 X2=X1 Z1=255 Z2=115

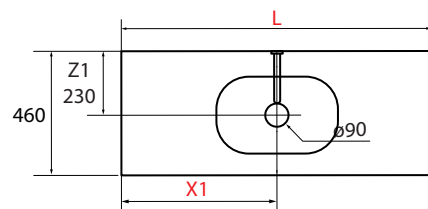
**CARLA**

Lavabo con grifo centrado



L øG=90 X1 X2=X1 Z1=270 Z2=60

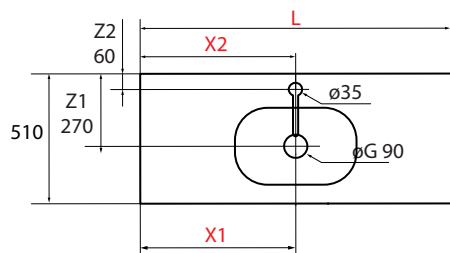
Lavabo con grifo a pared



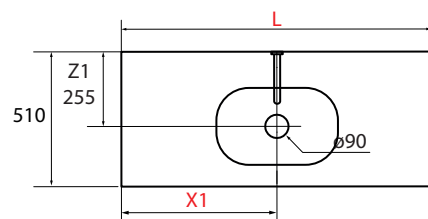
L øG=90 X1 Z1=230

Profundidad 460

Profundidad 510



L øG=90 X1 X2=X1 Z1=270 Z2=60



L øG=90 X1 Z1=255